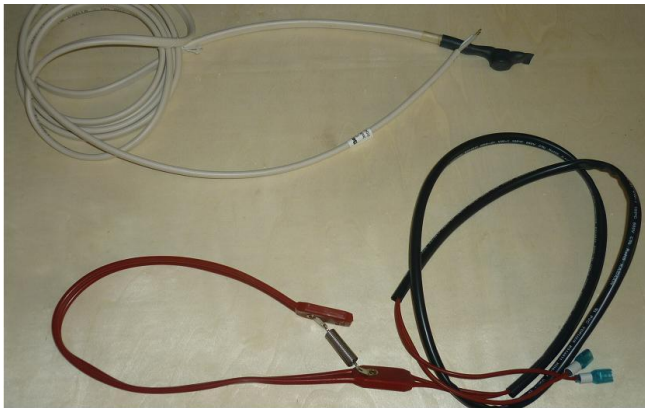


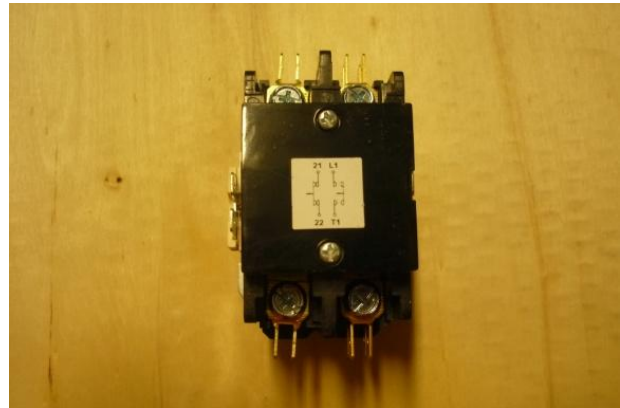
Winter kit nstallation

Winter Kit component:

- 1 ex heating cord with thermostat in White,
- 1 ex compressor resistance in red & black,
- 1 ex single phase contactor relay only for WP80, WP110.



Heating cord & Compressor resistance



Single phase contactor relay ref.: 20000-360007

Step 1: Remove the packing in a plane area, the top cover, front cabinet and the electric protection cover,



Photo 1

Step 2: Remove the compressor foam

To install the compressor resistance, you must remove the isolation compressor foam and unscrew the separation panel



Photo 2

Step 3: Compressor resistance installation

Install the compressor resistance and put back the compressor foam and the separation panel.



Photo 3

Step 4: Heating cord installation

The heating cord should be installed on the condensate tray as near as the evaporator to improve the defrost capacity. Then slide it under the compressor and fix it in the electric box.

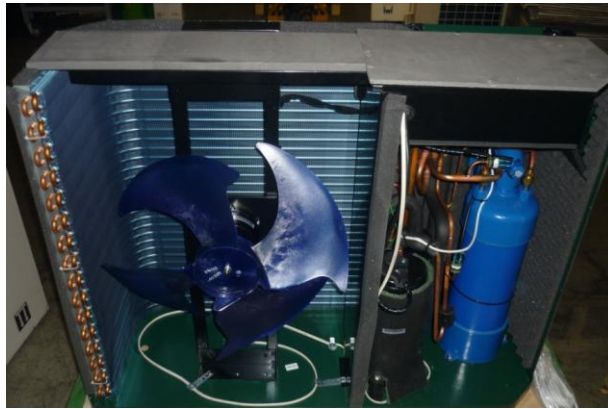


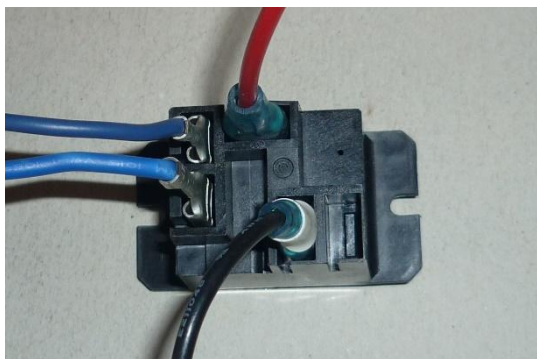
Photo 4

Step 5: Locate the compressor contact relay

- Dark blue wire is Neutral,
- Black wire is the compressor power supply - From the relay to the compressor,
- Red left wire for WP110 or Light blue for WP80 - Contact relay RLY1 on the PC1001,
- Red bottom wire for WP110 and Top red wire for WP80 is power supply 220V from the electric box.

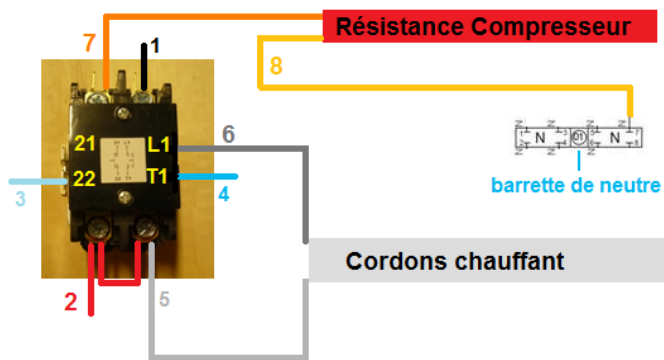


Relais simple pour WP110



Relais simple pour WP80

Summary diagram:



1. Câble noir représente l'alimentation du compresseur
2. Câble rouge représente alimentation 230V
3. Câble bleu : fil contact du relais RLY1 sur le PC1000(1)
4. Câble bleu: Neutre (n)
5. Câble translucide (phase) cordons chauffant
6. Câble blanc (neutre) cordons chauffant
7. Câble L1 (phase) résistance compresseur
8. Câble N (neutre) résistance compresseur

Step 6: Replace the relay by the single phase one

- Connect the black wire « compressor supply » to L1 relay position
- Connect the red left wire to the relay, it's the PC1001 power supply,
- Insert the thick red wire at the bottom on position 22 of single phase relay. This is the 230V input,
- Connect the blue right wire on the single phase. This is the neutral (N),
- Made a switch with a red wire in between T1 and 22 on the single-phase relay.



Photo 5

Step 7: Electric connection for the compressor resistance

Add a terminal on each wire then put the red wire L1 on 21 and the Neutral to Neutral as shown on the picture 6.

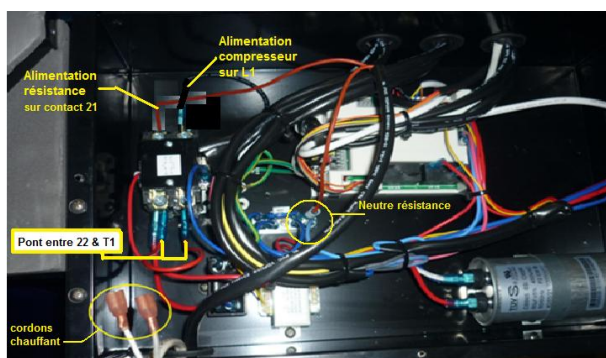


Photo 6

Connecter le fil neutre de la résistance compresseur ici



Photo 7

Once the compressor resistance is connected and the bridging is completed you can connect the heat cord to the single-phase relay.

Step 8: Heating cord installation

After the terminals added, plug the transparent wire (Phase) on **T1** and the white wire on Neutral as shown on picture 8.

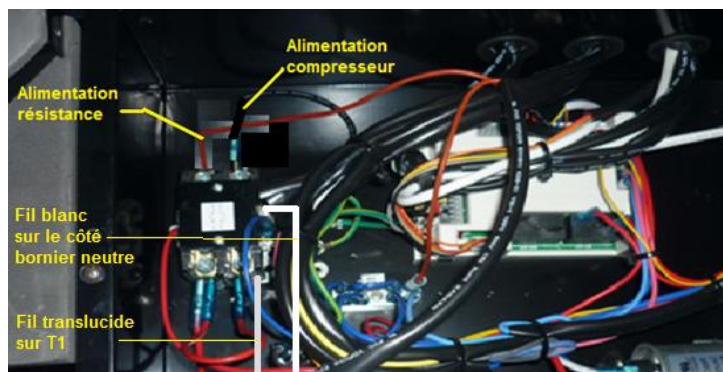


Photo 8

Step 9: Winter kit installation is finish

You just connected all the wires on the single-phase relay, close the electric cover and put back the front panel and top cover. You can use your pool heater ...